

**Collection Soltis.  
Automatisch gut.**





## Collection Soltis



## Soltis 86

### Anwendungen

Fassadenmarkisen

Markisen für Wintergarten und Glasdächer

Fensterläden

### Besondere Eigenschaften

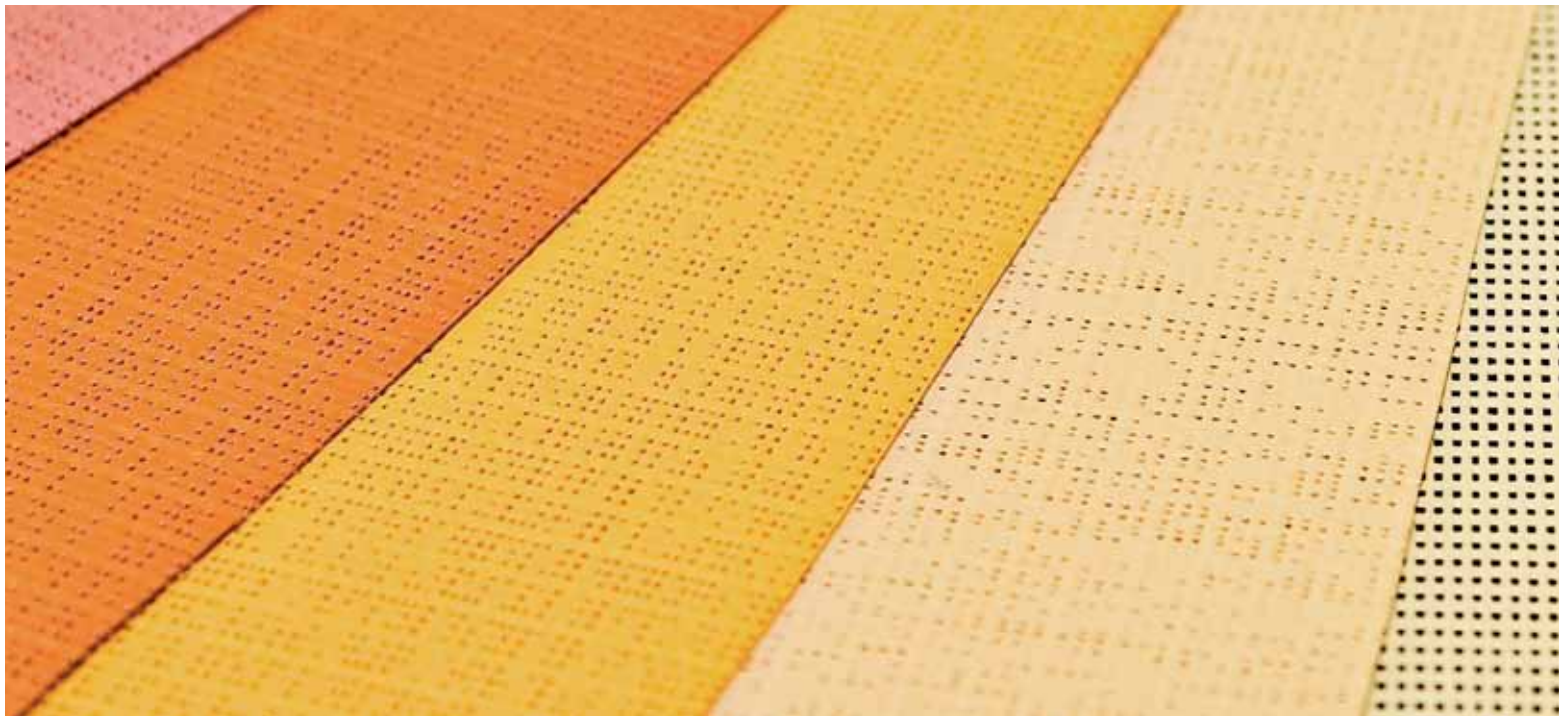
idealer Kompromiss zwischen Wärmeschutz und Sichtkomfort

ausgezeichnete Sicht nach draussen

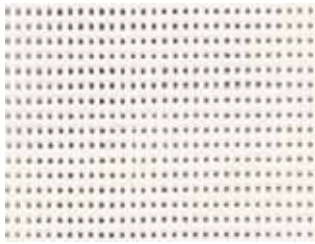
exzellente Wetter- und UV-Beständigkeit

leicht, beständig, 100% recycelfähig

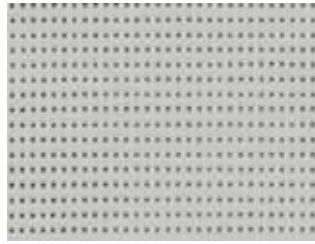
Feuerbeständigkeit M1/B1/VKF 5.2/B-s2, d0



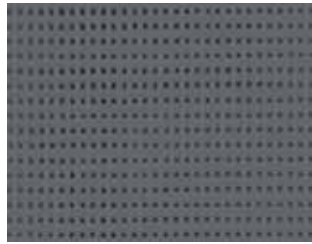
## Soltis 86



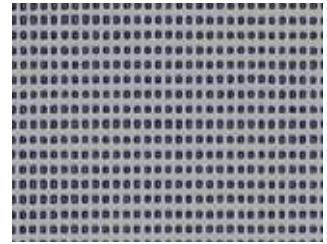
86-2044\*



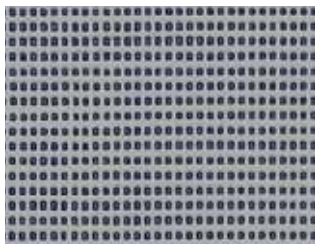
86-2171\*



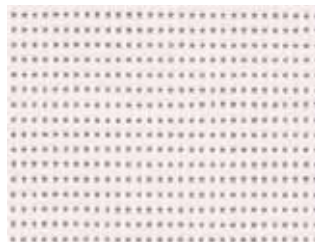
86-2167



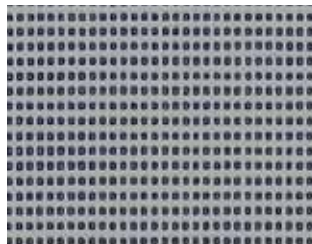
86-2048



(A)



(B)



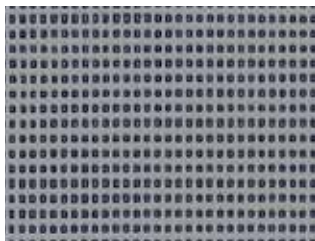
(A)



(B)

86-2046\*

86-2068



86-2045\*



86-2047\*



86-2053\*



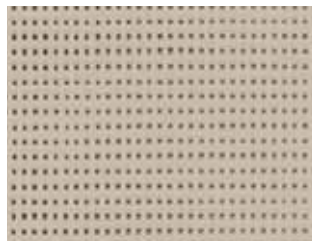
86-2043\*



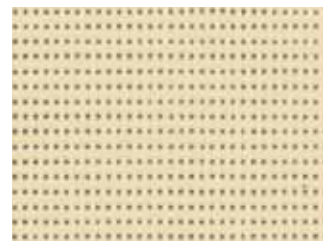
86-2148



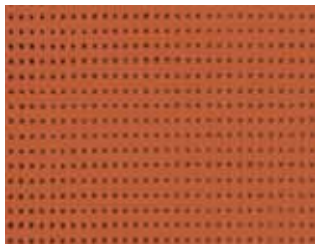
86-2012\*



86-2135\*



86-2175



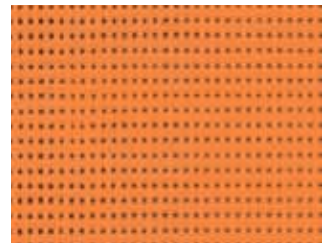
86-50261



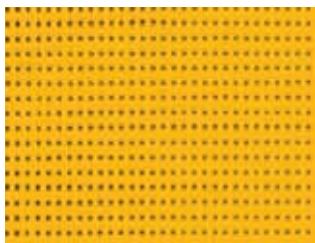
86-50260



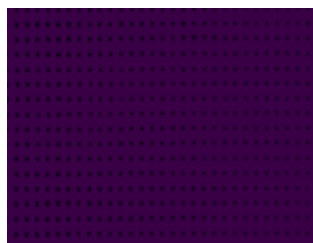
86-8255



86-8204



86-2166



86-50336



86-50342



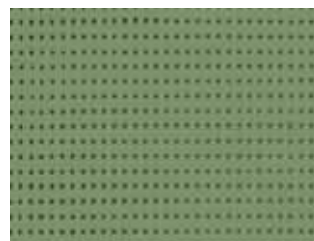
86-2161



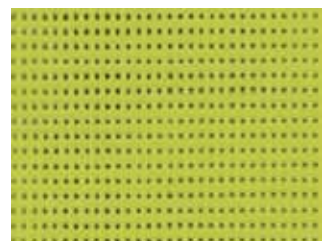
86-50264



86-50271



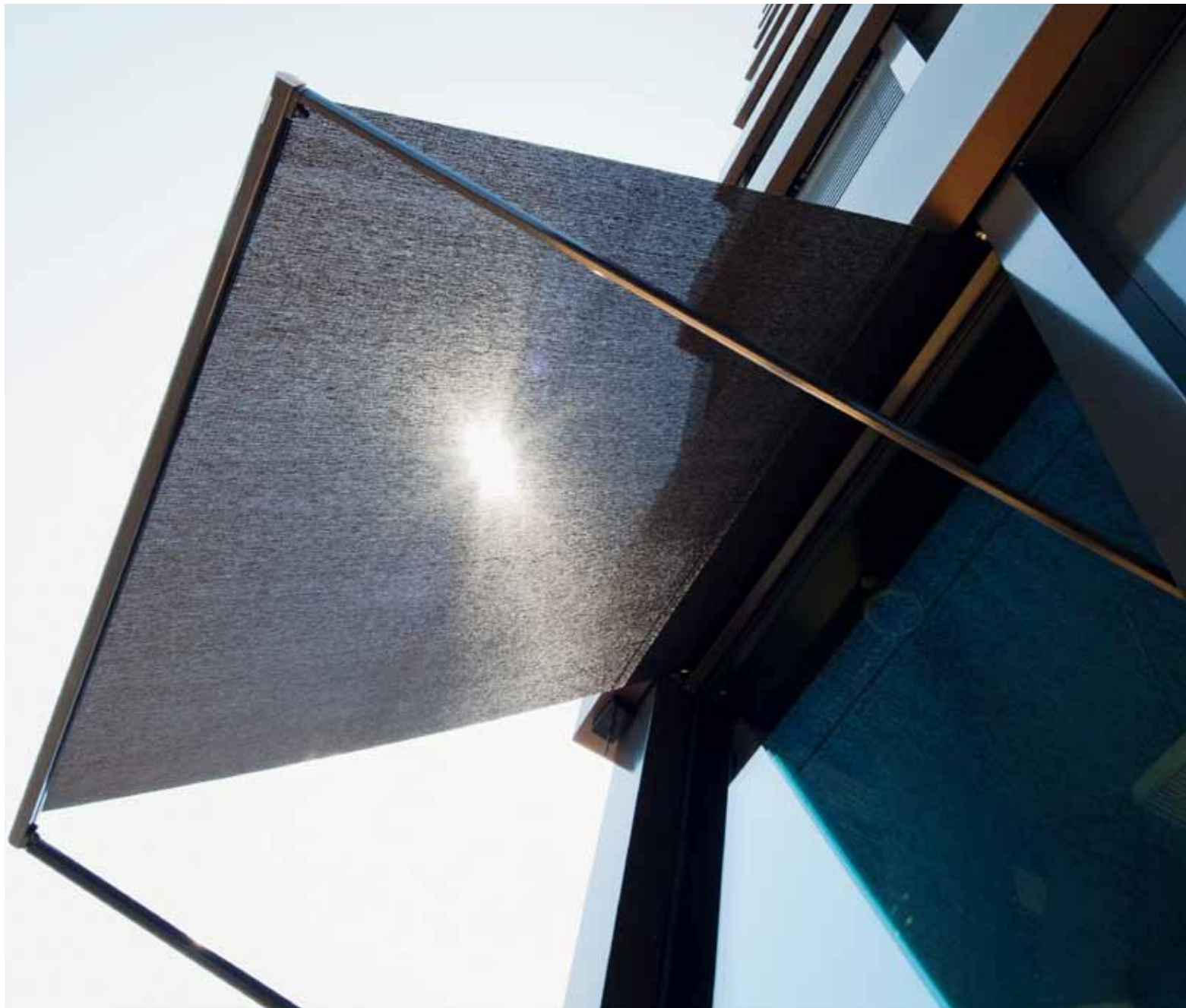
86-2158



86-50333

Standard Stoffbreite: 177 cm  
\* auch in Breite 267 cm erhältlich





## Soltis 92

---

### Anwendungen

Fassadenmarkisen

Markisen für Wintergarten und Glasdächer

Fensterläden

---

---

### Besondere Eigenschaften

hervorragender Wärmeschutz

optimaler Sicht- und Lichtkomfort

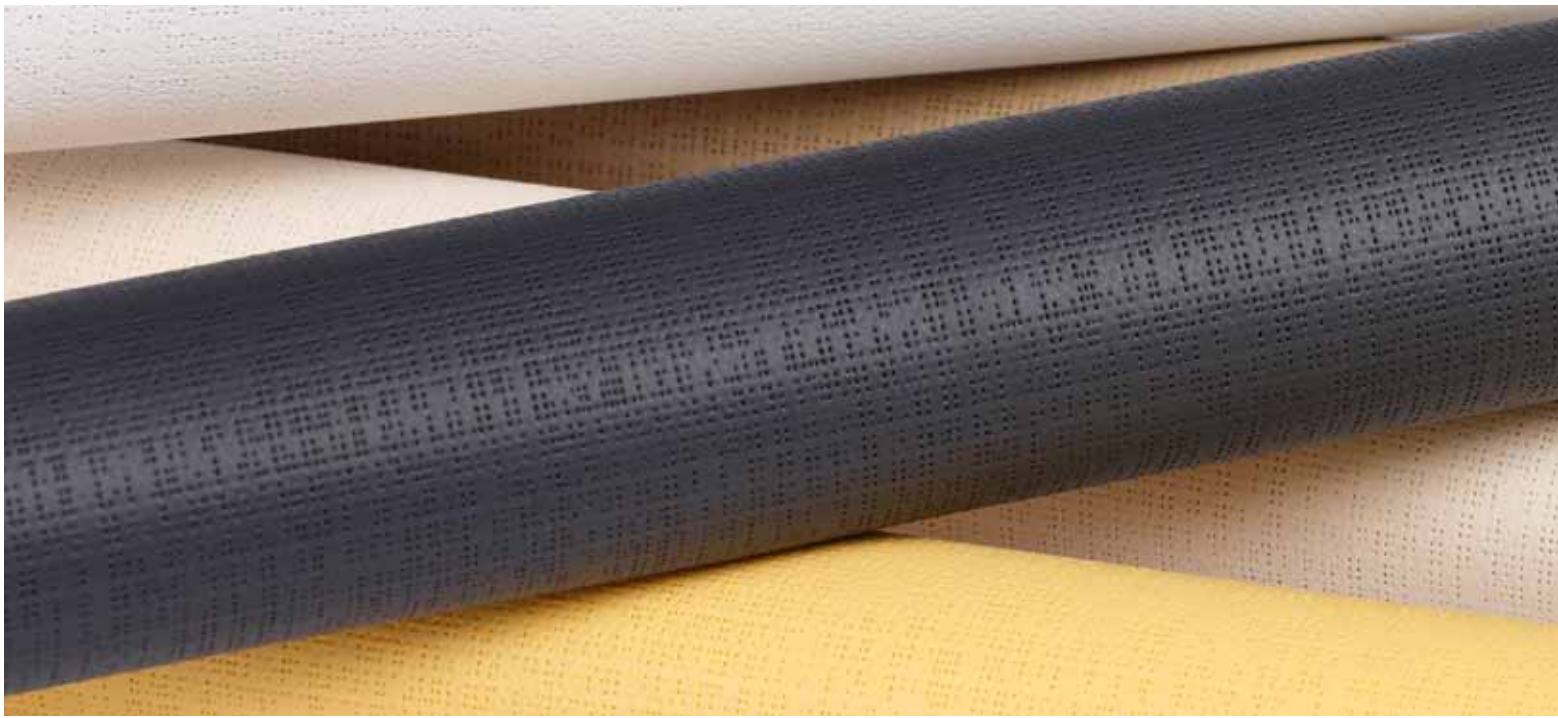
exzellente Wetter- und UV-Beständigkeit

leicht, beständig, 100% recycelfähig

grosse Farbauswahl

Feuerbeständigkeit M1/B1/VKF 5.2/B-s2, d0

---



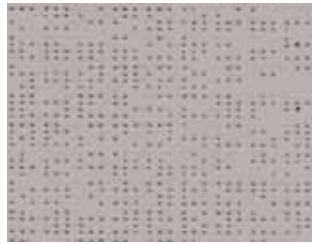
## Soltis 92



92-2044\*



92-50272



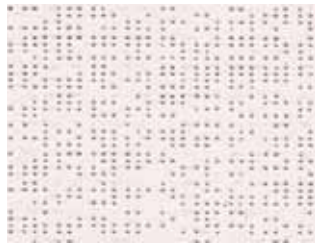
92-2065



92-2171\*

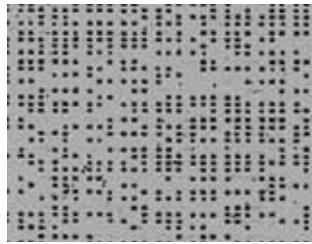


(A)

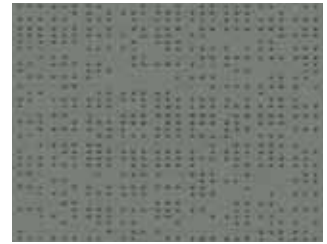


92-2046\*

(B)

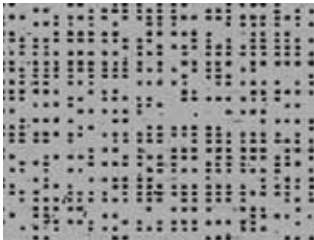


(A)

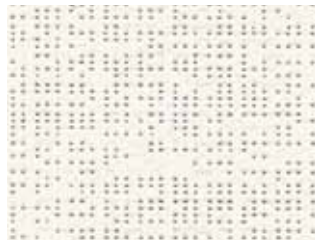


(B)

92-2074



(A)



92-2051\*

(B)



92-2048\*



92-2167\*



92-2045\*



(A)

92-2068



(B)



92-2047\*

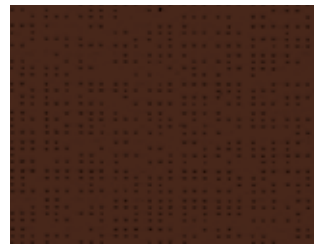




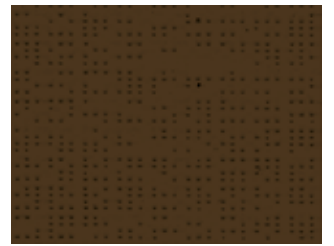
92-2053\*



92-2043\*



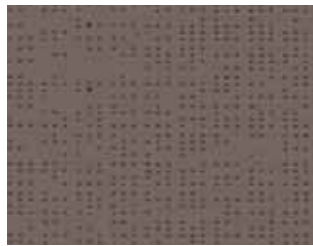
92-2137



92-2148



92-2012



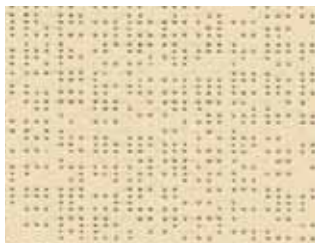
92-50266



92-50265\*



92-2135\*



92-2175



92-50274



92-50261



92-2172



92-8204



92-50260



92-2152



92-50267



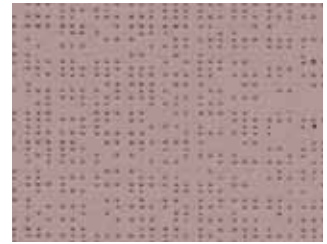
92-8255



92-50268



92-50336



92-2163



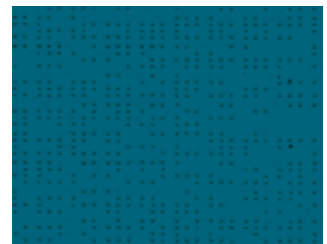
92-2164



92-2161



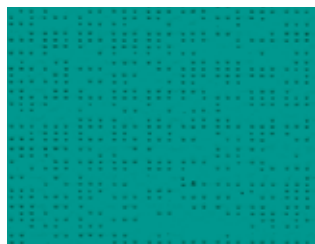
92-50342



92-50270



92-2160



92-50271



92-50269



92-50264



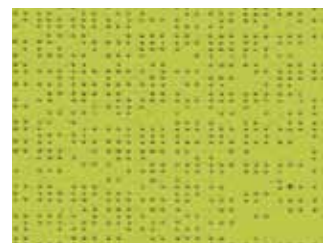
92-2158



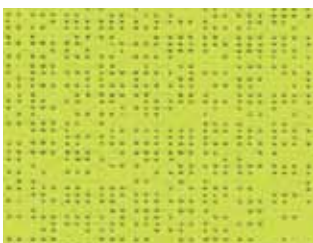
92-2149



92-2039



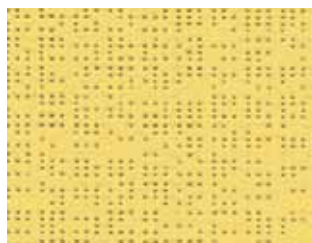
92-50333



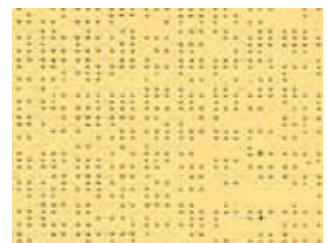
92-2157



92-2166



92-50273



92-2013

Standard Stoffbreite: 177 cm  
\* auch in Breite 267 cm erhältlich







## Soltis 93 / Soltis Low E

### Anwendungen Soltis 93

Fassadenmarkisen

Markisen für Wintergarten und Glasdächer

### Besondere Eigenschaften Soltis 93

wirksamer Wärmeschutz

ausgezeichnete Sicht nach draussen

einzigartige, regelmässige Oberflächenstruktur

leicht, beständig, 100% recycelfähig

grosse Stoffbreite für alle Farben

Feuerbeständigkeit M1/B1/VKF 5.2/B-s2, d0

### Anwendungen Soltis Low E

Fassadenmarkisen

Markisen für Wintergarten und Glasdächer

### Besondere Eigenschaften Soltis Low E

idealer Wärmeschutz und Sichtkomfort

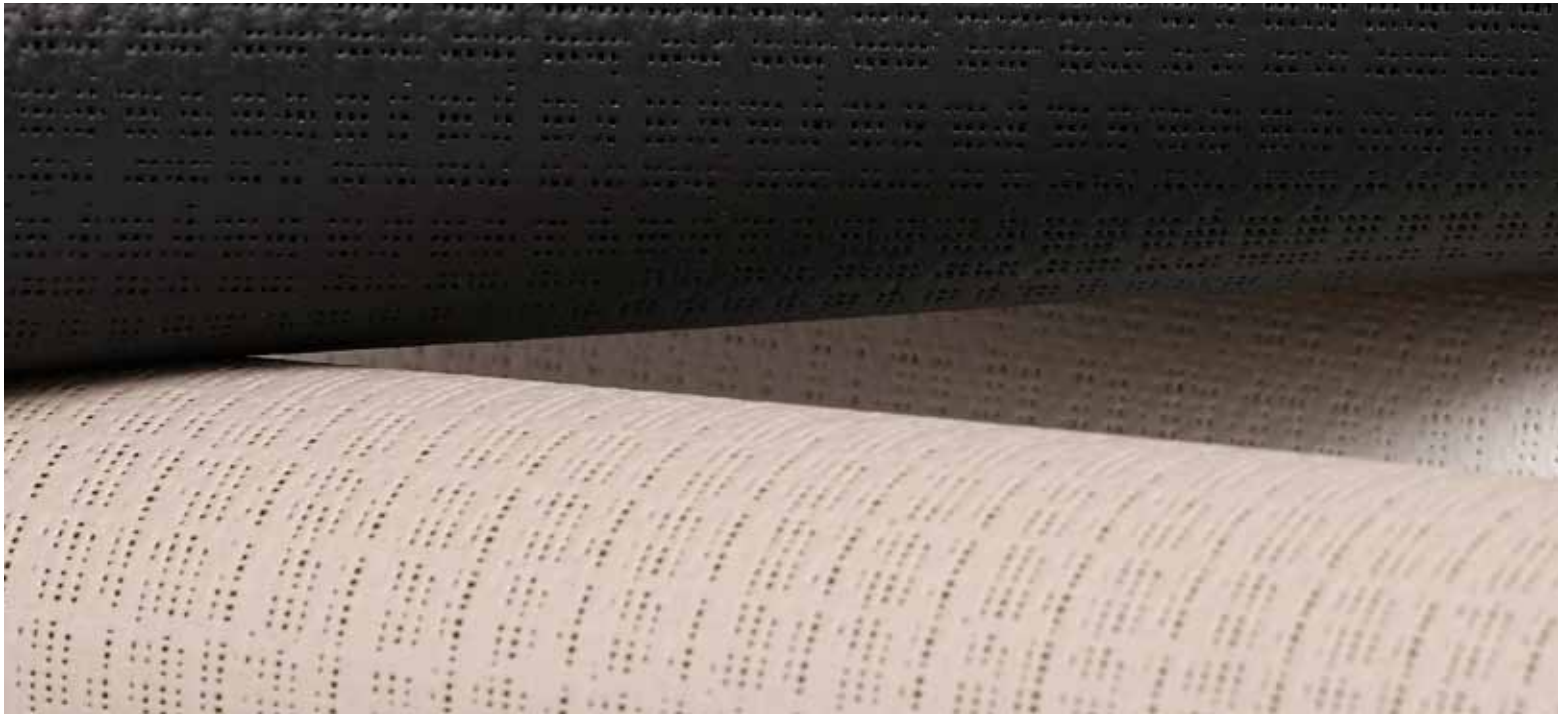
ausgezeichnete Sicht nach draussen

exzellente Wetter- und UV-Beständigkeit

leicht, beständig, 100% recycelfähig

Reduktion des Energiebedarfs in den Gebäuden

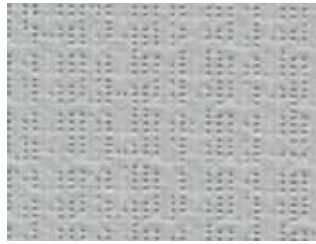
Feuerbeständigkeit M1/B1/VKF 5.2/B-s2, d0



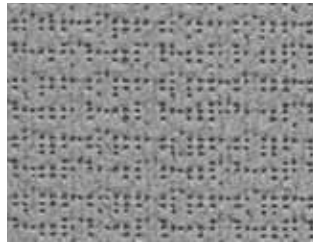
## Soltis 93



93-3044



93-3011



93-3045



93-3048



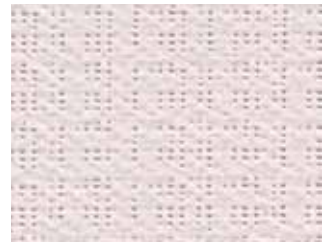
93-3047



93-3053



(A)



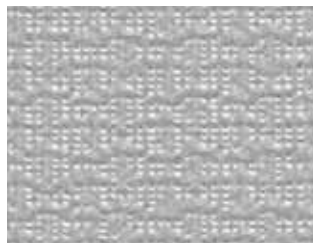
(B)



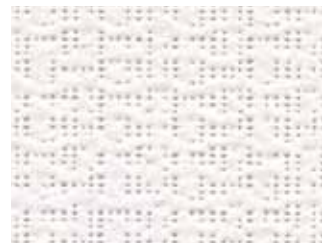
93-3003



93-3043



(A)

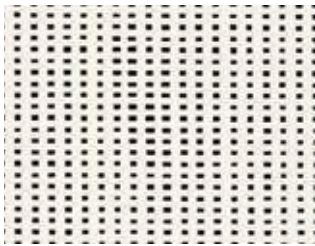


(B)

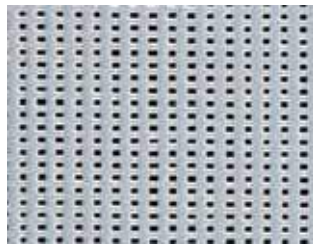
Standard Stoffbreite: 267 cm



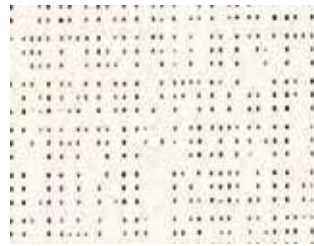
## Soltis LowE



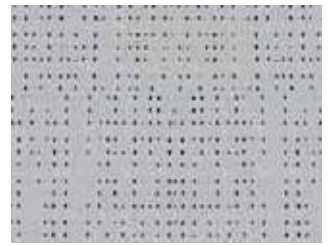
86-2061 E



86-2063 E



92-2061 E



92-2063 E

Standard Stoffbreite: 177 cm







## Soltis Black out B92 und B702

---

### Anwendungen

Fassadenmarkisen  
Indoor Rollo (B702)  
Fensterläden (B92)

---

---

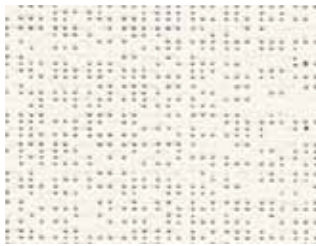
### Besondere Eigenschaften

verdunkelnd oder lichtundurchlässig  
wirksamer Wärmeschutz  
hohe mechanische Festigkeit  
beständig, 100% recycelfähig  
Feuerbeständigkeit B92: M2/B1/B-s2, d0  
Feuerbeständigkeit B702: M2/B1/VKF 5.2/B-s2, d0

---



## Soltis Black out B92 und B702

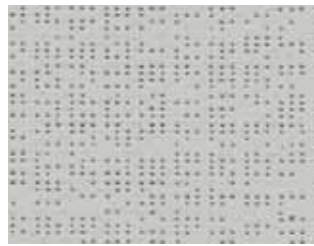


(B)

B92-1044



(A)

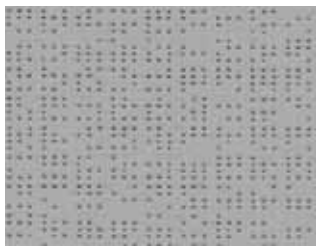


(B)

B92-2171



(A)



(B)

B92-1046



(A)

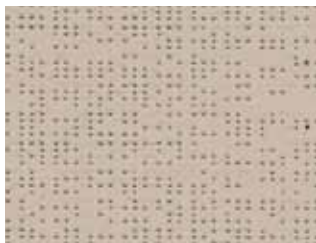


(B)

B92-1045



(A)

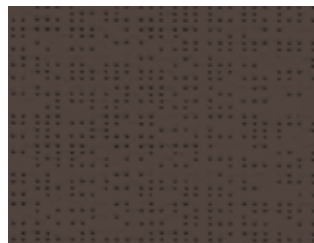


(B)

B92-2135



(A)



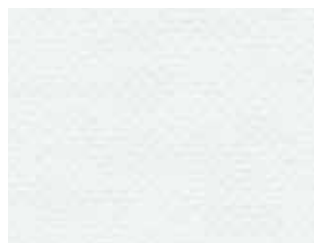
(B)

B92-1043



(A)

Standard Stoffbreite B92: 170 cm  
Standard Stoffbreite B702: 180 cm



(A)






(B)




B702-455



## STOFFEIGENSCHAFTEN – COLLECTION SOLTIS

DESSIN	SEITE			TUCH				SONNEN-SCHUTZ-FAKTOR AUSSEN	SONNEN-SCHUTZ-FAKTOR INNEN	
				T <sub>e</sub>	R <sub>e</sub>	A <sub>e</sub>	T <sub>v</sub>	g-total <sub>e</sub>	g-total <sub>i</sub>	
<b>SOLTIS 86</b>										
86-2012		0.38	0.43	0.18	0.27	0.55	0.17	0.15	0.48	M1/B1/VKF 5.2/B-s2,d0
86-2043		0.38	0.43	0.12	0.10	0.78	0.11	0.12	0.53	"
86-2044		0.38	0.43	0.32	0.59	0.09	0.30	0.21	0.38	"
86-2045		0.38	0.43	0.14	0.29	0.57	0.14	0.12	0.47	"
86-2046	A	0.38	0.43	0.21	0.43	0.36	0.20	0.16	0.43	"
	B			0.19	0.58	0.23	0.19	0.14	0.38	"
86-2047		0.38	0.43	0.16	0.07	0.77	0.16	0.14	0.54	"
86-2048		0.38	0.43	0.22	0.42	0.36	0.22	0.17	0.43	"
86-2053		0.38	0.43	0.15	0.05	0.80	0.15	0.14	0.54	"
86-2068	A	0.38	0.43	0.16	0.35	0.49	0.15	0.13	0.45	"
	B			0.16	0.07	0.77	0.15	0.14	0.54	"
86-2135		0.38	0.43	0.20	0.41	0.39	0.20	0.15	0.43	"
86-2148		0.38	0.43	0.14	0.13	0.73	0.14	0.13	0.52	"
86-2158		0.38	0.43	0.15	0.25	0.60	0.14	0.13	0.48	"
86-2161		0.38	0.43	0.16	0.17	0.67	0.14	0.14	0.51	"
86-2166		0.38	0.43	0.30	0.45	0.25	0.26	0.21	0.42	"
86-2167		0.38	0.43	0.15	0.17	0.68	0.14	0.13	0.51	"
86-2171		0.38	0.43	0.19	0.39	0.42	0.17	0.15	0.44	"
86-2175		0.38	0.43	0.28	0.57	0.15	0.26	0.19	0.39	"
86-8204		0.38	0.43	0.27	0.41	0.32	0.19	0.19	0.44	"
86-8255		0.38	0.43	0.23	0.24	0.53	0.17	0.18	0.49	"
86-50260		0.38	0.43	0.15	0.13	0.72	0.14	0.14	0.52	"
86-50261		0.38	0.43	0.21	0.35	0.44	0.15	0.16	0.45	"
86-50264		0.38	0.43	0.17	0.11	0.72	0.16	0.15	0.52	"
86-50271		0.38	0.43	0.21	0.34	0.45	0.15	0.16	0.46	"
86-50333		0.38	0.43	0.22	0.32	0.46	0.19	0.17	0.46	"
86-50336		0.38	0.43	0.19	0.15	0.66	0.15	0.16	0.51	"
86-50342		0.38	0.43	0.16	0.09	0.75	0.14	0.14	0.53	"
<b>SOLTIS 92</b>										
92-2012		0.42	0.45	0.07	0.30	0.63	0.06	0.08	0.46	M1/B1/VKF 5.2/B-s2,d0
92-2013		0.42	0.45	0.18	0.57	0.25	0.16	0.14	0.38	"
92-2039		0.42	0.45	0.03	0.08	0.89	0.03	0.07	0.53	"
92-2043		0.42	0.45	0.02	0.12	0.86	0.02	0.06	0.52	"
92-2044		0.42	0.45	0.20	0.70	0.10	0.19	0.14	0.34	"
92-2045		0.42	0.45	0.03	0.35	0.62	0.03	0.05	0.45	"
92-2046	A	0.42	0.45	0.09	0.48	0.43	0.08	0.08	0.41	"
	B			0.09	0.63	0.28	0.08	0.07	0.36	"
92-2047		0.42	0.45	0.05	0.08	0.87	0.05	0.08	0.53	"
92-2048		0.42	0.45	0.08	0.46	0.46	0.08	0.08	0.41	"
92-2051	A	0.42	0.45	0.10	0.50	0.40	0.10	0.09	0.40	"
	B			0.09	0.70	0.21	0.09	0.07	0.34	"
92-2053		0.42	0.45	0.03	0.06	0.91	0.03	0.07	0.54	"
92-2065		0.42	0.45	0.10	0.46	0.44	0.07	0.09	0.41	"
92-2068	A	0.42	0.45	0.05	0.40	0.55	0.05	0.06	0.43	"
	B			0.05	0.08	0.87	0.05	0.08	0.53	"
92-2074	A	0.42	0.45	0.04	0.38	0.58	0.04	0.06	0.44	"
	B			0.04	0.25	0.71	0.04	0.07	0.48	"
92-2135		0.42	0.45	0.09	0.46	0.45	0.06	0.08	0.41	"
92-2137		0.42	0.45	0.03	0.08	0.89	0.03	0.07	0.53	"
92-2148		0.42	0.45	0.03	0.14	0.83	0.03	0.06	0.51	"
92-2149		0.42	0.45	0.05	0.16	0.79	0.04	0.07	0.51	"
92-2152		0.42	0.45	0.15	0.37	0.48	0.05	0.12	0.45	"
92-2157		0.42	0.45	0.15	0.51	0.34	0.10	0.12	0.40	"
92-2158		0.42	0.45	0.04	0.28	0.68	0.03	0.06	0.47	"
92-2160		0.42	0.45	0.08	0.36	0.56	0.04	0.08	0.44	"
92-2161		0.42	0.45	0.05	0.19	0.76	0.03	0.07	0.49	"
92-2163		0.42	0.45	0.09	0.44	0.47	0.04	0.08	0.42	"
92-2164		0.42	0.45	0.10	0.45	0.45	0.04	0.09	0.42	"
92-2166		0.42	0.45	0.21	0.54	0.25	0.17	0.15	0.39	"

## STOFFEIGENSCHAFTEN – SOLTIS

DESSIN	SEITE			TUCH				SONNENSCHUTZFAKTOR AUSSEN	SONNENSCHUTZFAKTOR INNEN	
				T <sub>e</sub>	R <sub>e</sub>	A <sub>e</sub>	T <sub>v</sub>			
92-2167		0.42	0.45	0.03	0.19	0.78	0.03	0.06	0.50	"
92-2171		0.42	0.45	0.08	0.43	0.49	0.06	0.08	0.42	"
92-2172		0.42	0.45	0.19	0.43	0.38	0.08	0.15	0.43	"
92-2175		0.42	0.45	0.19	0.64	0.17	0.16	0.13	0.36	"
92-8204		0.42	0.45	0.17	0.47	0.36	0.08	0.13	0.41	"
92-8255		0.42	0.45	0.12	0.28	0.60	0.04	0.11	0.47	"
92-50260		0.42	0.45	0.05	0.14	0.81	0.04	0.07	0.51	"
92-50261		0.42	0.45	0.15	0.40	0.45	0.06	0.12	0.43	"
92-50264		0.42	0.45	0.05	0.13	0.82	0.04	0.07	0.51	"
92-50265		0.42	0.45	0.09	0.49	0.42	0.06	0.08	0.40	"
92-50266		0.42	0.45	0.04	0.19	0.77	0.04	0.07	0.50	"
92-50267		0.42	0.45	0.06	0.27	0.67	0.03	0.08	0.47	"
92-50268		0.42	0.45	0.16	0.37	0.47	0.05	0.13	0.44	"
92-50269		0.42	0.45	0.09	0.35	0.56	0.05	0.09	0.45	"
92-50270		0.42	0.45	0.04	0.18	0.78	0.03	0.07	0.50	"
92-50271		0.42	0.45	0.08	0.38	0.54	0.02	0.08	0.44	"
92-50272		0.42	0.45	0.12	0.56	0.32	0.09	0.10	0.38	"
92-50273		0.42	0.45	0.08	0.42	0.50	0.05	0.08	0.43	"
92-50274		0.42	0.45	0.08	0.35	0.57	0.04	0.08	0.45	"
92-50333		0.42	0.45	0.11	0.37	0.52	0.07	0.10	0.44	"
92-50336		0.42	0.45	0.07	0.18	0.75	0.03	0.08	0.50	"
92-50342		0.42	0.45	0.06	0.10	0.84	0.04	0.08	0.52	"
<b>SOLTIS 93</b>										
93-3003		0.42	0.45	0.14	0.48	0.38	0.11	0.11	0.41	M1/B1/VKF 5.2/B-s2,d0
93-3011		0.42	0.45	0.12	0.43	0.45	0.10	0.10	0.42	"
93-3043		0.42	0.45	0.06	0.13	0.81	0.06	0.08	0.52	"
93-3044		0.42	0.45	0.22	0.65	0.13	0.20	0.15	0.36	"
93-3045		0.42	0.45	0.07	0.32	0.61	0.07	0.08	0.46	"
93-3046	A	0.42	0.45	0.15	0.43	0.42	0.13	0.12	0.42	"
	B	0.42	0.45	0.15	0.60	0.25	0.13	0.11	0.37	"
93-3047		0.42	0.45	0.07	0.08	0.85	0.07	0.09	0.53	"
93-3048		0.42	0.45	0.09	0.47	0.44	0.08	0.08	0.41	"
93-3051	A	0.42	0.45	0.15	0.47	0.38	0.14	0.12	0.41	"
	B	0.42	0.45	0.15	0.65	0.20	0.14	0.11	0.35	"
93-3053		0.42	0.45	0.06	0.06	0.88	0.06	0.08	0.54	"
<b>SOLTIS LowE</b>										
86-2061 E	A	0.38	0.43	0.18	0.58	0.24	0.17	0.13	0.38	M1/B1/VKF 5.2/B-s2,d0
	B	0.38	0.43	0.18	0.61	0.21	0.17	0.13	0.37	"
86-2063 E		0.38	0.43	0.15	0.60	0.25	0.15	0.11	0.37	"
92-2061 E	A	0.42	0.45	0.04	0.70	0.26	0.04	0.04	0.34	"
	B	0.42	0.45	0.04	0.71	0.25	0.04	0.04	0.33	"
92-2063 E		0.42	0.45	0.05	0.69	0.26	0.04	0.04	0.34	"
<b>SOLTIS BLACK OUT</b>										
B92-1043	B	0.65	0.60		0.12	0.88		0.05	0.52	M2/B1/VKF 5.2/B-s2,d0
B92-1044	B	0.65	0.60		0.72	0.28		0.01	0.33	"
B92-1045	B	0.65	0.60		0.35	0.65		0.03	0.44	"
B92-1046	B	0.65	0.60		0.49	0.51		0.03	0.40	"
B92-2135	B	0.65	0.60		0.47	0.53		0.03	0.41	"
B92-2171	B	0.65	0.60		0.45	0.55		0.03	0.41	"
B92-Rückseite	A	0.65	0.60		0.29	0.71		0.04	0.46	"
B702-455	A	0.75	0.60		0.72	0.28		0.02	0.33	M2/B1/VKF 5.3/B-s2,d0
B702-455	B	0.75	0.60		0.06	0.94		0.05	0.53	M2/B1/VKF 5.3/B-s2,d0

Alle Daten beziehen sich auf Flächen, die der Sonne zugewandt sind.



## Legende



Dicke



Feuerbeständigkeit

M1/NFP 92-507

M2/NFP 92-507

B1/DIN 4102-1

VKF 5.2/SN 198898

VKF 5.3/SN 198898

Euroclass B-s2, d0/EN 13501

$T_e$  = Transmissionskoeffizient Sonnenspektrum

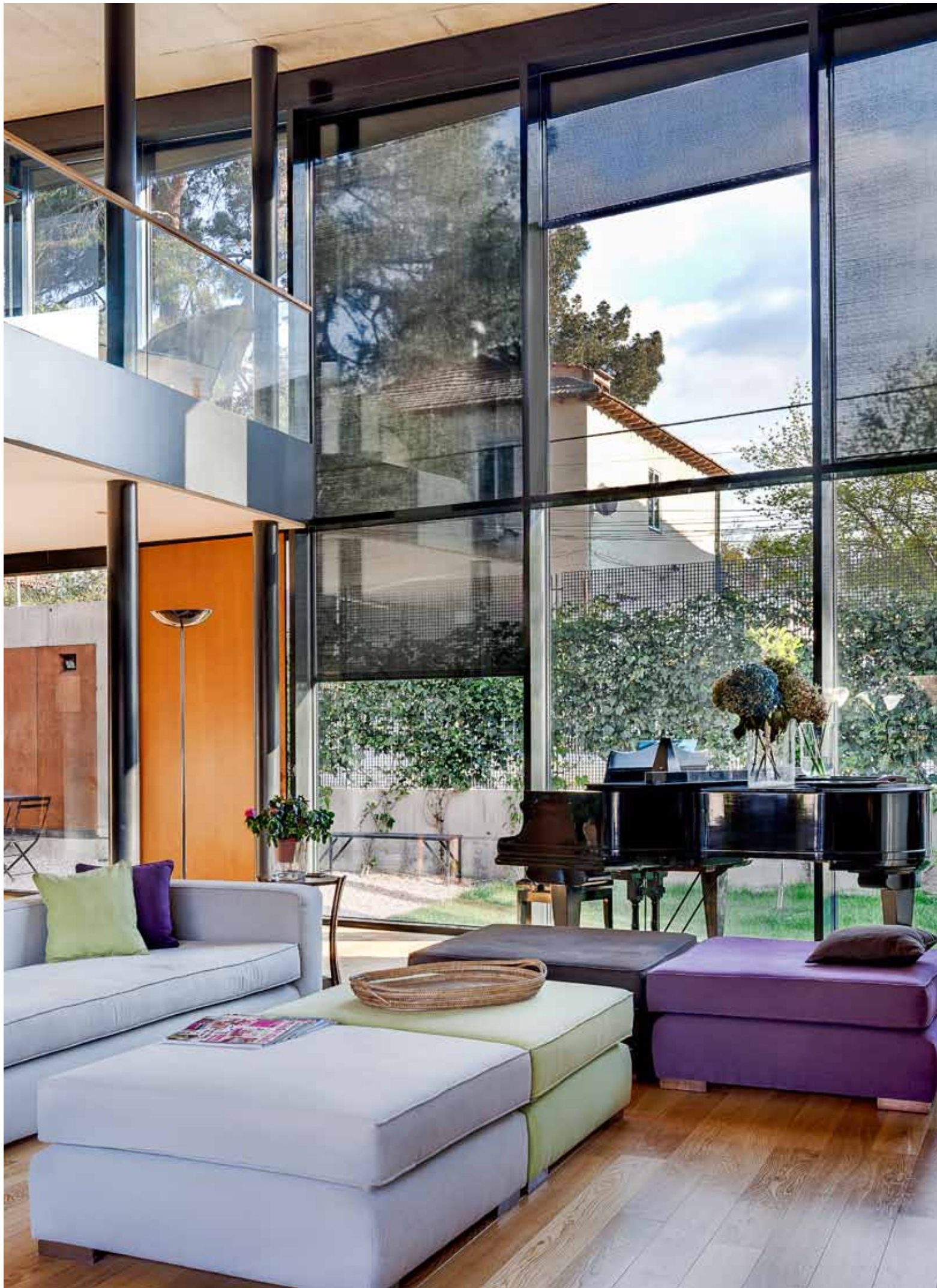
$R_e$  = Reflexionskoeffizient Sonnenspektrum

$A_e$  = Strahlungsabsorptionsfaktor

$T_v$  = Transmissionskoeffizient sichtbares Spektrum

$g\text{-total}_e$  = Gesamtenergiedurchlassgrad für «geschlossenen» aussenliegenden Sonnenschutz mit Verglasung, Berechnung nach SN EN 13363-1-A1, Referenzverglasung C gemäss EN 14501,  $g = 0.59$ ,  $U = 1.20$  [W/m<sup>2</sup>K]

$g\text{-total}_i$  = g-Wert innen - Referenzverglasung C gemäss EN 14501,  $g = 0.59$ ,  $U = 1.20$  [W/m<sup>2</sup>K]





[www.griessergroup.com](http://www.griessergroup.com)

**PIRMIN MURER  
FALEGNAMERIA SA**



6850 Mendrisio  
Tel. 091 646 18 42  
6528 Camorino  
Tel. 091 857 97 81



[www.pirminmurer.ch](http://www.pirminmurer.ch)

[info@pirminmurer.ch](mailto:info@pirminmurer.ch)

F finestre - G gelosie - T tapparelle - P porte - A armadi

